

COREtec®
the Original

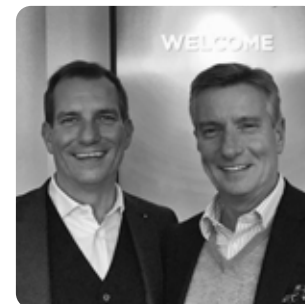
The **NATURALS** BY COREtec
COLLECTION



INCLUDING
HERRINGBONE PATTERN



From one true original to another, it's a family affair!



The real values in life are those created and found within families; authenticity, trust and the opportunity given to be creative and express yourself.

These same values drive our company and they define our corporate culture. We saw an opportunity to create a better floor. We chased a dream and created a whole new category along the way. As the innovators of COREtec®, the Original, 100% waterproof floor, we did just that. Today, our consumers are enjoying our solutions of stylish, strong floors that sustain real family lives full of entertaining, kids and pets.

"Click, lock, enjoy. It is as simple as that!"

It all began as an entrepreneurial business in 2001, within our founder's heart and spare bedroom as our "headquarters". With the invention of COREtec®, the original, patented, 100% waterproof floor in 2013, we grew rapidly to become the leading brand of these unique and highly innovative products. We launched our European division in 2016 and that same year were acquired and embraced into the family of Shaw Floors, an industry leader and subsidiary of Berkshire Hathaway, led by the world-renowned investor, Warren Buffett.

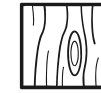
We've come a long way from where we started to where we are now. But those family values guide us still. Led by management and embraced by every employee, dealer, and partner, we are recognized as the problem-solvers, innovators and design enthusiasts. Today we offer an incredible range of resilient, durable floors that can be purchased, installed and lived upon in one single day. Click, lock, enjoy. It is as simple as that!

The most difficult task will be choosing from our wide variety of life-like decors. But don't worry, you are sure to find one to match your style because we have a floor for every personality.

Welcome to our family, We promise to remain authentic to the core.

What's in your core?

Your COREtec® floor
always fits your style &
stands up to real life,
it's engineered for simplicity.



Always fits your style

We have a passion for providing a wide selection of authentic natural looks, so you can express what makes you, you. Persistent in product innovation – including micro-beveled edges, enhanced painted bevels & Embossed in Register technology – we create the most appealing designs & textures available.



Stands up to real life

Our floors are 100% waterproof, kid proof & pet proof. Try them in your kitchen or bathroom: they won't warp or buckle, even if submerged in water.

Our 100% waterproof core, resilient vinyl and protective wear layer will keep your floor looking good for the life of your home. So naturally, all COREtec® floors come with a limited lifetime residential warranty.



Is engineered for simplicity

COREtec® is easy to install, to care for and to live with. Its secure angle tap system doesn't require any glue or nails and can be installed over existing floors without additional underlayment.

Forget about sanding, polishing, sealing or refinishing: our floors are maintenance-free.

There's a million reasons to choose COREtec®, but here's our top 6.

Our floors:

- ✓ Are extremely stable
- ✓ Reduce noise
- ✓ Are wear resistant
- ✓ Do not need to acclimate
- ✓ Are suitable for underfloor heating & cooling
- ✓ Install on any surface



Cork, the natural choice

All our floors have a unique attached cork underlayment. Why? It's warmer, quieter and easily installs over existing hard surfaces, perfectly concealing imperfections in subfloors. And: it's one of the most sustainable materials out there. Cork is harvested from the cork tree and can be re-harvested every decade without damaging the tree. A natural solution that brings only benefits to your home or business:



added sound insulation



a comfortable and warmer floor



a natural protection against mold & mildew



no need for separate underlayment



absorbs subfloor imperfections



SOUND CORE[®]

The original 100% waterproof floor, with extra noise reducing technology.

The **NATURALS**
BY CORETEC

**0.55 mm
HIGH
PERFORMANCE
WEAR LAYERS**

IN STYLE
indistinguishable
from the real thing

COMFORT
warm & quiet
underfoot

ACOUSTIC
excellent
sound reduction

SUSTAINABLE
attached cork
underlayment

**14
PATTERNS**
182 x 1220 mm

**8
AVAILABLE
IN HERRINGBONE**
110 x 660 mm

**8 mm
TOTAL
THICKNESS**



100% Waterproof



Extremely stable



Pet proof



Reduces noise



Easy to install



Wear resistant



Installation on any surface



No acclimatisation necessary



Ideal for underfloor
heating & cooling



Electrostatic performance



From standard to herringbone: it's child's play!
Click, lock, enjoy.

**COLORS IN
STANDARD PATTERN**

TIMBER 50-LVPE-853	4 V-GROOVE	28
LEAF 50-LVPE-858	4 V-GROOVE	30
SWAMP 50-LVPE-859	4 V-GROOVE	32
HARVEST 50-LVP-801		34
SAND 50-LVP-802		36
GRAIN 50-LVP-803		38



**COLORS IN 2 PATTERNS
STANDARD OR HERRINGBONE**

ACORN 50-LVPE-854	4 V-GROOVE	4 V-GROOVE	12
HAZE 50-LVPE-855	4 V-GROOVE	4 V-GROOVE	14
BARK 50-LVPE-856	4 V-GROOVE	4 V-GROOVE	16
SPELT 50-LVPE-857	4 V-GROOVE	4 V-GROOVE	18
LUMBER 50-LVP-804		4 V-GROOVE	20
DESERT 50-LVP-805		4 V-GROOVE	22
FOREST 50-LVP-806		4 V-GROOVE	24
MEADOW 50-LVP-807		4 V-GROOVE	26



ALSO AVAILABLE IN HERRINGBONE

4 V-GROOVE



50-LVPEH-854



50-LVPE-854

4 V-GROOVE

ACORN

Standard: 50-LVPE-854
Herringbone: 50-LVPEH-854



The NATURALS COLLECTION

HAZE

Standard: 50-LVPE-855
Herringbone: 50-LVPEH-855



The NATURALS
COLLECTION



4 V-GROOVE

50-LVPE-855

ALSO AVAILABLE IN HERRINGBONE

4 V-GROOVE



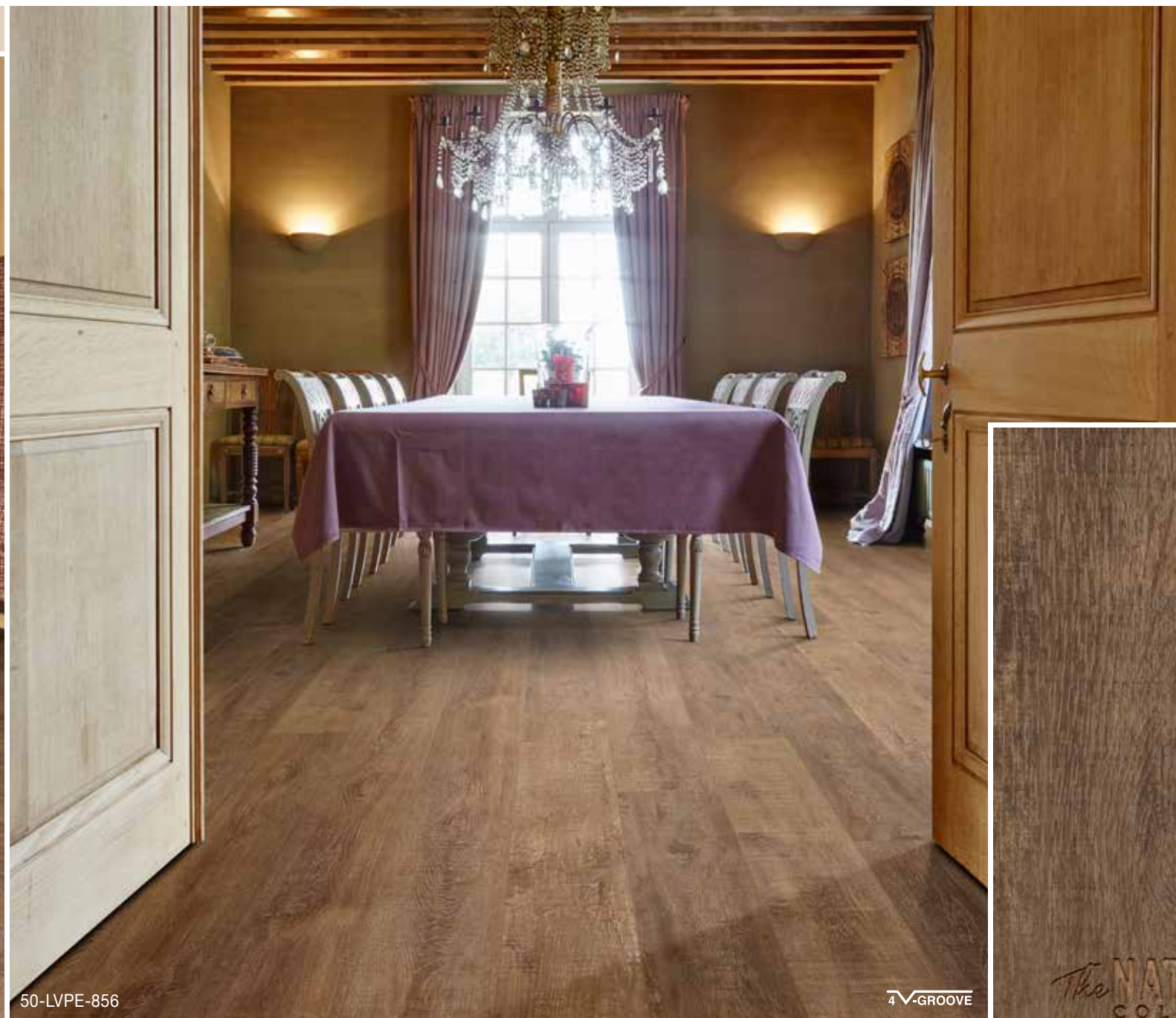
50-LVPEH-855

ALSO AVAILABLE IN HERRINGBONE

4 V-GROOVE



50-LVPEH-856



50-LVPE-856

4 V-GROOVE

Standard: 50-LVPE-856
Herringbone: 50-LVPEH-856

BARK



SPELT

Standard: 50-LVPE-857
Herringbone: 50-LVPEH-857



4 V-GROOVE

50-LVPE-857

ALSO AVAILABLE IN HERRINGBONE

4 V-GROOVE



50-LVPEH-857

The NATURALS
COLLECTION

ALSO AVAILABLE IN **HERRINGBONE**

4 **V-GROOVE**



50-LVPEH-804



50-LVP-804

LUMBER

Standard: 50-LVP-804
Herringbone: 50-LVPEH-804



The **NATURALS**
COLLECTION

DESERT

Standard: 50-LVP-805
Herringbone: 50-LVPEH-805



ALSO AVAILABLE IN HERRINGBONE

4 V-GROOVE



The **NATURALS** COLLECTION
by CORELITE

ALSO AVAILABLE IN **HERRINGBONE**

4 **V-GROOVE**



50-LVPEH-806



50-LVP-806

FOREST

Standard: 50-LVP-806
Herringbone: 50-LVPEH-806



The **NATURALS**
COLLECTION

MEADOW

Standard: 50-LVP-807
Herringbone: 50-LVPEH-807



ALSO AVAILABLE IN HERRINGBONE

4 V-GROOVE





50-LVPE-853

4 V-GROOVE

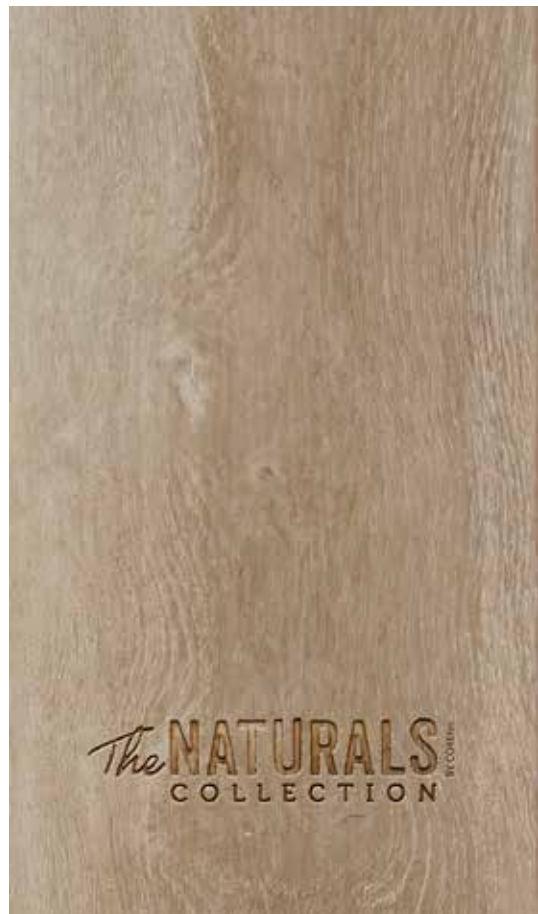
The **NATURALS**
COLLECTION

TIMBER

50-LVPE-853

LEAF

50-LVPE-858



4 V-GROOVE

50-LVPE-858



50-LVPE-859

4 V-GROOVE

SWAMP

50-LVPE-859



The NATURALS
COLLECTION

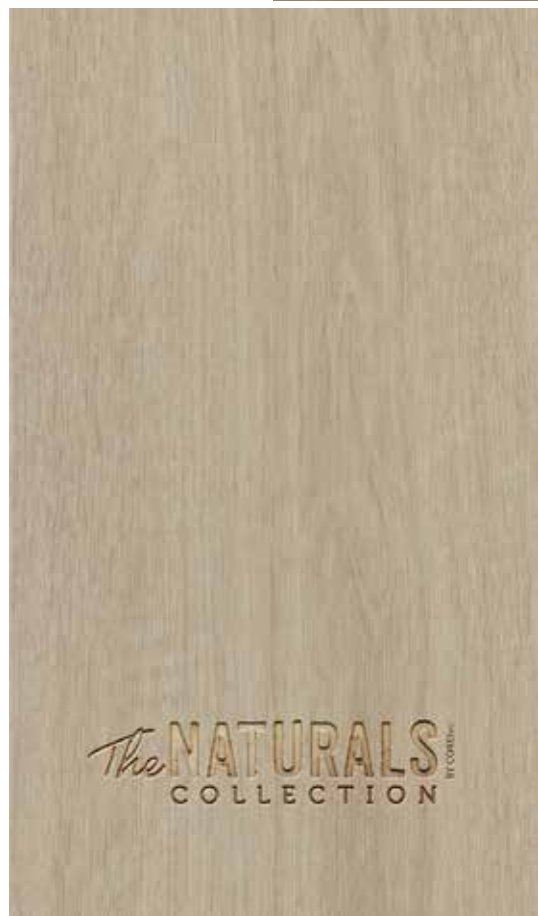
BY COREL

HARVEST

50-LVP-801



50-LVP-801



The **NATURALS** COLLECTION



50-LVP-802

50-LVP-802

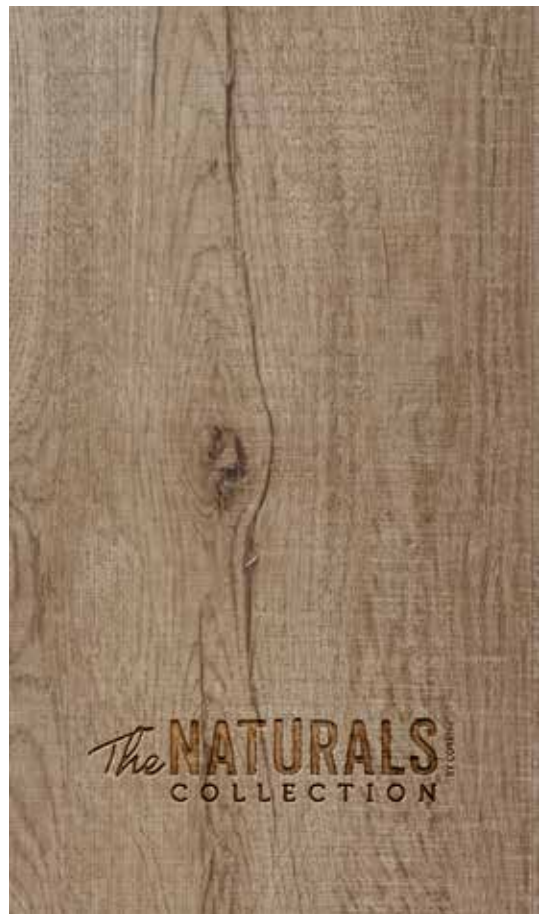
SAND



The **NATURALS** COLLECTION
BY COREtec

GRAIN

50-LVP-803

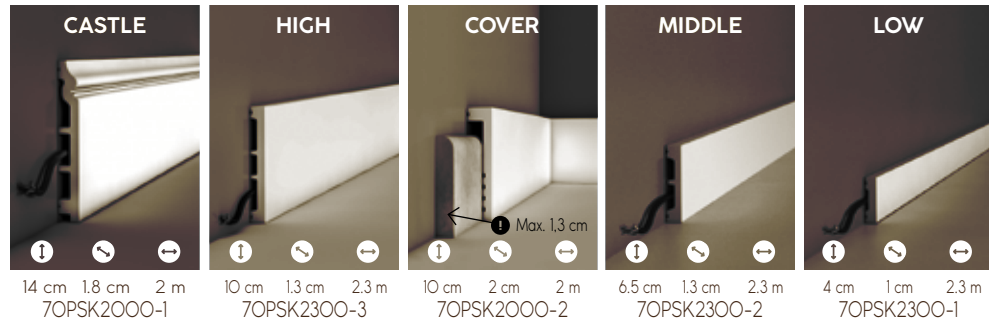


50-LVP-803

ACCESSORIES

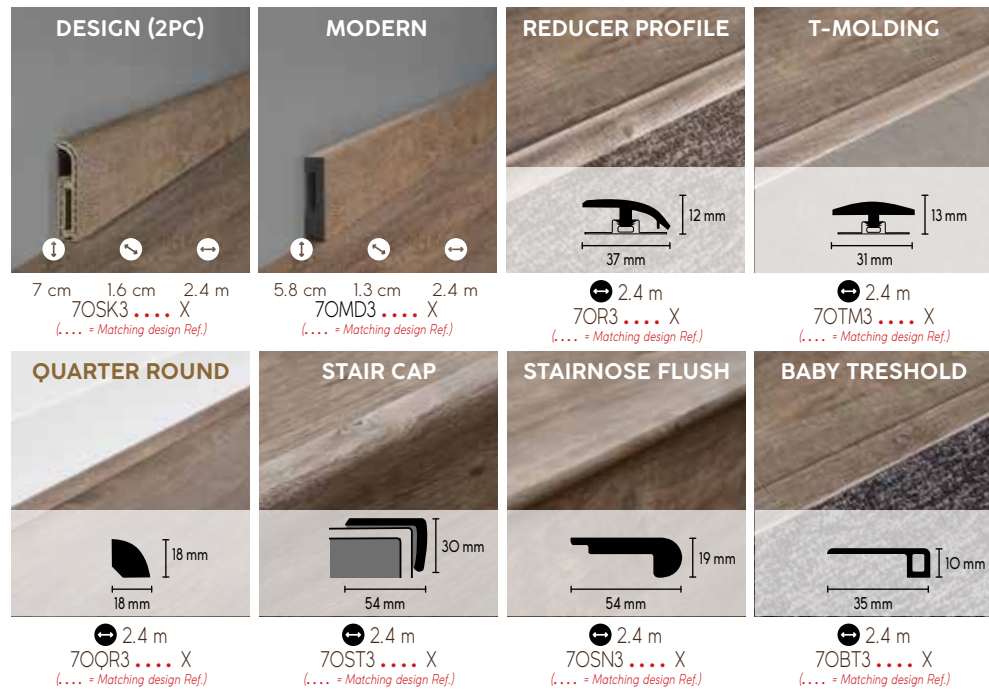
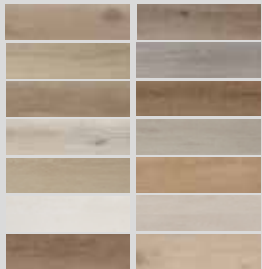
Paintable skirtings

Our paintable skirtings are 100% waterproof & shock resistant.



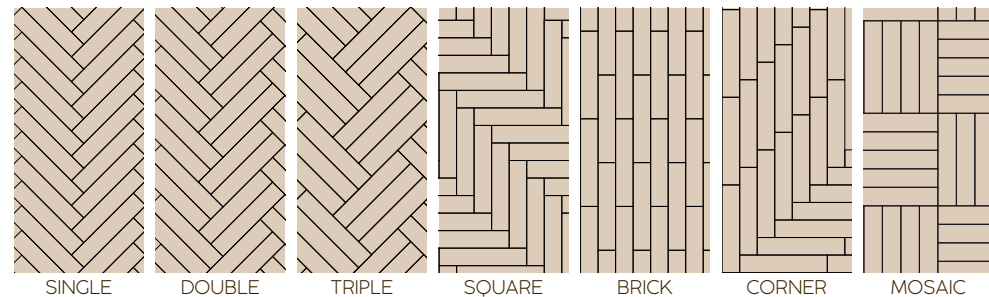
Matching design accessories

Our design accessories match the design of your floor & are also 100% waterproof & shock resistant.



Herringbone variations

Mix & match your own style...

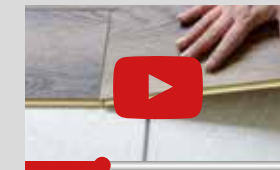
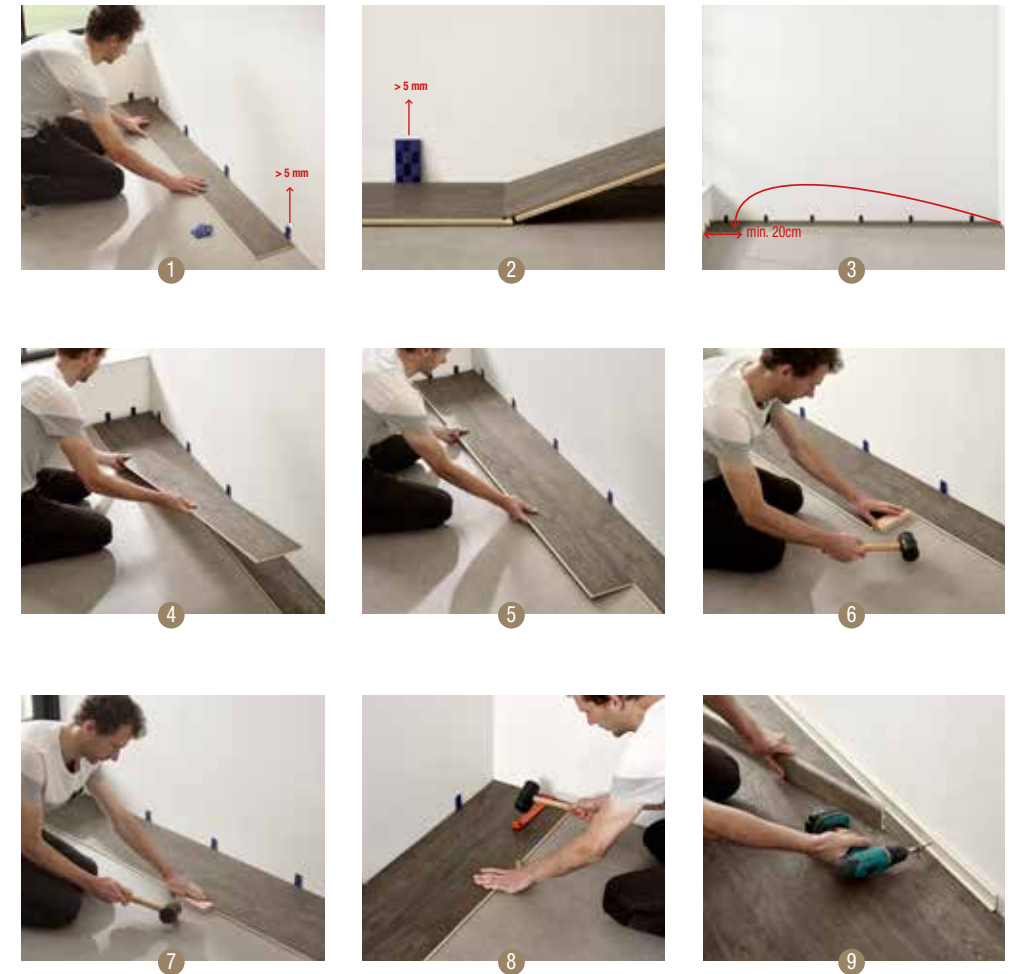


INSTALLATION

Easy to install

COREtec® floors have the easiest install in the market.

Follow the steps or watch our installation video on our website. Surf to www.coretecfloors.com



MAINTENANCE

The COREtec® Clean, quick & green kit:

- Daily cleaner
- Deep cleaner
- Stain remover



80 CCS 3400

TECHNICAL SPECIFICATIONS



8.00 mm
(EN ISO 24346)



0.55 mm
(EN ISO 24340)



STANDARD
182 x 1220 mm
HERRINGBONE
110 x 660 mm



STANDARD
12 pcs
2.66 m²
22.04 kg

HERRINGBONE
32 pcs
2.32 m²
20 kg

Level of Use

Úroveň použitia / Klasa ścieralności /
Класс использования / Európai besorolás /
Úroveň použiti / Atsparumo klasė

23 / 33 (EN ISO 10874)

Geometrical characteristics

Geometrické parametre / Charakterystyka
Geometryczna / Геометрические
характеристики / Geometria jellemző /
Rozměry / Geometrinės savybės

Conform (ISO 24337)

Wear resistance

Odolnosť voči opotrebeniu / Wytrzymałość na
zużycie / Износостойкость / Korásállóság /
Odolnost proti opotřebení / Atsparumas dilimui

Pass 5000 cycles (EN 13329 Annex E)

Castor chair resistance

Odolnosť voči kolieskam na stoličke / Odporność
na krzesła obrotowe z kółkami / Стойкость
к креслам с роликами / Görgős szék teszt /
Odolnost vůči kolečkovým židlým / Atsparumas
kėdžių ratukams

Pass 25000 cycles (ISO 4918)

Effect of furniture leg

Efekt z nôh nábytku / Wpływ nogi meblowej /
Воздействие мебельных ножек /
Bűtorláthatás / Vliv nábytkové nožky / Baldų
poveikis

No visible changes (EN 16581)

Residual indentation

Trvalá deformácia / Pozostałe wgniecenie /
Остаточные вмятины / Megmaradó
benyomódás / Trvalá deformace / Likęs įdubimas

≤ 0.10 mm (EN ISO 24343-1)

Resistance to staining

Odolnosť voči napúšťaniu farbou /
Odporność na barwienie / Устойчивость к
пятнообразованию / Foltállóság / Odolnost proti
vzniku skvrn / Atsparumas dėmėms

5 (No visible changes) (EN 438-2)

Locking strength

Pevnosť pripojenia / Wytrzymałość blokowania /
Прочность крепления / Záróerő / Pevnost
zajištění / Blokavimo dėmės

LS ≥ 2.0 / SS ≥ 3.5 (EN 24334)

Dimensional stability

Rozmerová stabilita / Stabilność wymiarowa /
Стабильность размеров / Méretstabilitás /
Rozměrová stabilita / Matmenų stabilumas

Pass ≤ 0.25% (EN ISO 23999)

Colour fastness to light

Stálosť farby na svetle / Odporność koloru
na światło / Устойчивость окраски к свету /
szintartósság / Stálobarevnost na svetle / Spalvų
atsparumas šviesai

> grade 6 (ISO 105-B02)

Impact Sound Reduction

Akustická izolácia / Izolacja akustyczna /
Звукоизоляция / Hangszigetelés / Akustická
izolace / Garso slopinimas

ΔL_w = 20 dB (ISO 10140-3 / EN 717-2)

ΔL_{LIN} = 10 dB (ISO 10140-3 / EN 717-2)

Formaldehyde emission class

Formaldehídová skupina / Emisja
formaldehydu / Класс эмиссии
формальдегида / Formaldehyd csoport /
Formaldehídová skupina / Formaldehyde group

E1 (EN 717-1)

Fire classification

Klasifikácia voči požiaru / klasyfikacja
ogniowa / Класс огнестойкости / tűzállósági
osztály / Požární klasifikace / Degumo klasifikacija

Bfl - S1 (EN 13501)

Slip resistance

Protišmykovosť / Śliskość / Стойкость к
скольжению / Csúszásmentes / Protiskluznost /
Slidumo klasė

DS - RIO (EN 13893 / DIN 51130)

Underfloor heating

Podlahové vykurovanie / Ogrzewanie
podłogowe / Полы с подогревом / Padlófűtésre /
Podlahové vykurování / Šildomos grindys

Suitable

Electrostatic performance

Elektrostatické prevedenie / Akumulacja ładunków
elektrostatycznych / Электростатичность /
Elektromos feltöltődés / Elektrostatické
provedení / Antistatškumas

≤ 2 kV (EN 1815)

Thermal resistance

Teplná odolnosť / Odporność cieplna /
Термостойкость / Hőállóság / Teplotní odolnost /
Terminis atsparumas

0.066 m²-K/W



LIFETIME
WARRANTY
RESIDENTIAL



10 YEAR
WARRANTY
COMMERCIAL



DISPENSING DANGEROUS INTERESTS
A+
A+ A+ A+ A+ C



abZ: Z-156.610-1695



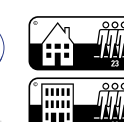
DOP-ELV
USFLOORS Int'l Inc.
Tendelstraat 20
8790 WAREGEM
Belgium
resilient floor covering



PRODUCT CERTIFIED FOR
LOW CHEMICAL EMISSIONS
UL.COM/IGG
UL-2818
GOLD



EMISION CLASS FOR
BUILDING MATERIAL
M1



E1
RCHO



SOUND
core
BY COREtec

Warranty (Years) The warranty covers manufacturing defects and premature wear in the event of normal use.

Záruka (rok) Záruka sa vzťahuje na výrobné chyby a predčasné opotrebenie v prípade bežného používania.

Termin gwarancji (rok) Gwarancja obejmuje wadyfabryczne i przedwczesne zużycie w przypadku normalnego użytkowania.

Гарантия (лет) Гарантия покрывает производственные дефекты и преждевременный износ при нормальном использовании.

A garancia gyártási hibákra és idő előtti elhasználódásra általában használatnál érvényes.

Záruka (rok) Záruka se vzťahuje na vady z výroby a předčasné opotřebení v případě běžného používání.

Garantija (Metai) Garantija taikoma gamybos trūkumams ir per greitam nusidėvėjimui eksploatuojant normaliomis sąlygomis

COREtec[®]
FLOORS

Souverainestraat 27 - 9770 Kruisem (Belgium)
info@usfloors.be · www.coretecfloors.com

USFLOORS A PROUD DIVISION OF **Shaw** INDUSTRIES